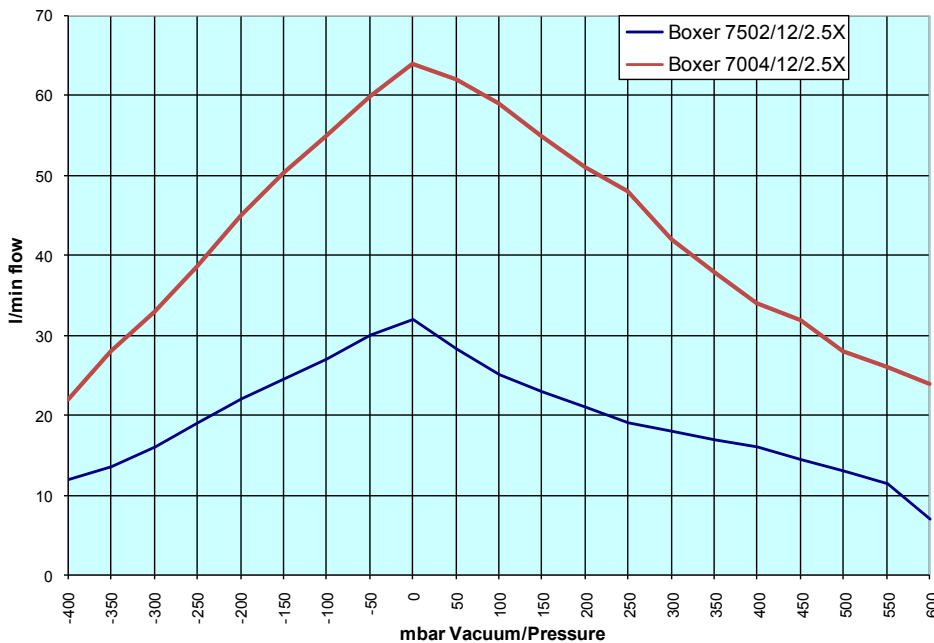


Low ripple
Oem gas pump
Dual or quad head
High quality DC motor



The Boxer 7000 is a unique high performance gas pump which is particularly suited for gas and dust monitoring. The pump is fitted with integral damping chambers and a resonating membrane. The dual head arrangement further balances the flow.

The pumps can be supplied with either parallel head configuration for max flow or with series head configuration for max vacuum or pressure performance. The use of high performance engineering plastics in the pump's construction allows it's use in high temperature applications such as combustion gas analyses. Vibration of the pump is minimised with the integrated mounting dampers.



- Flow rate of up to 62 l/min free flow
- Dual or Quad head
- Parallel or series configuration
- Integrated ripple dampers
- High quality brushed motor
- Integrated vibration dampers
- High temperature applications
- Maintenance free

Technical Data:

Motor Permanent Magnet brushed 12V DC
 Wetted path materials PPS (polyphenylene sulphide), Nitrile, Steel
 Tube connections Barbed fittings for Ø6 to Ø8mm ID tubing
 Maximum current 7500 - 3A, 7000 - 5.5A
 Max ambient operational temperature 50°C
 Max media temperature 100°C
 Weight Boxer 7500-1100g
 Boxer 7000-1870g

Ordering information

The pumps come as standard arranged in parallel configuration.

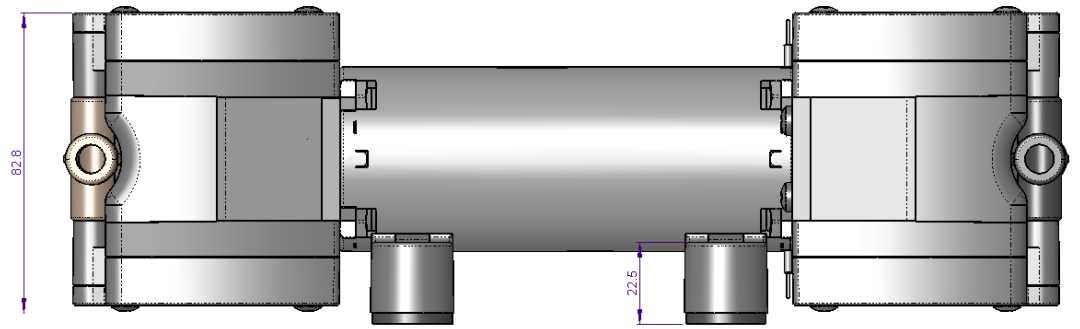
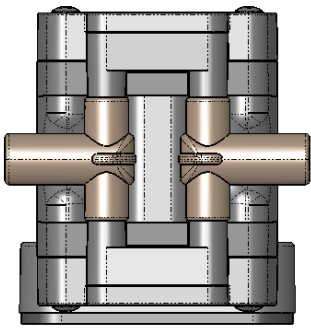
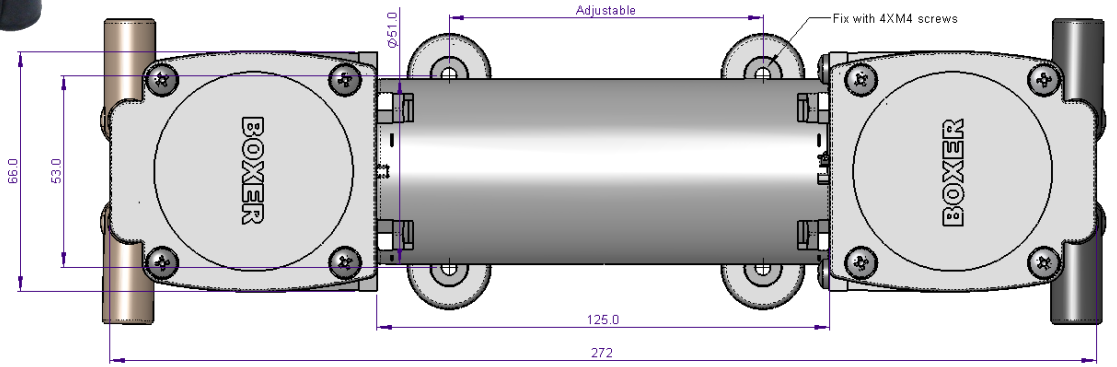
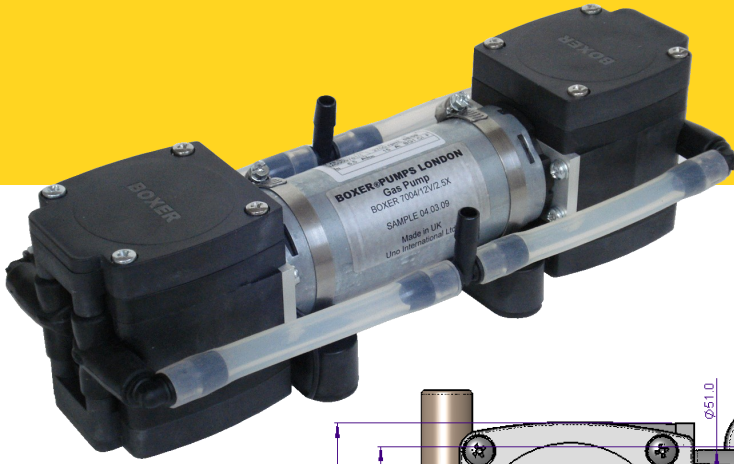
Arrangement of heads for series configuration can be supplied upon request.

Boxer 7502 7502.000
 Boxer 7004 7004.000

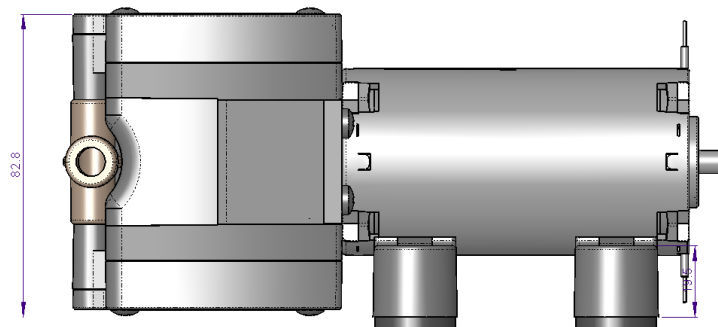
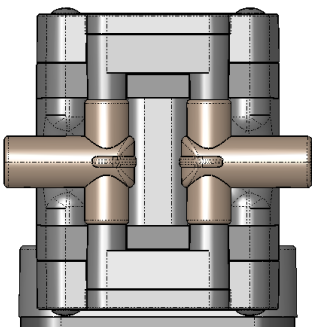
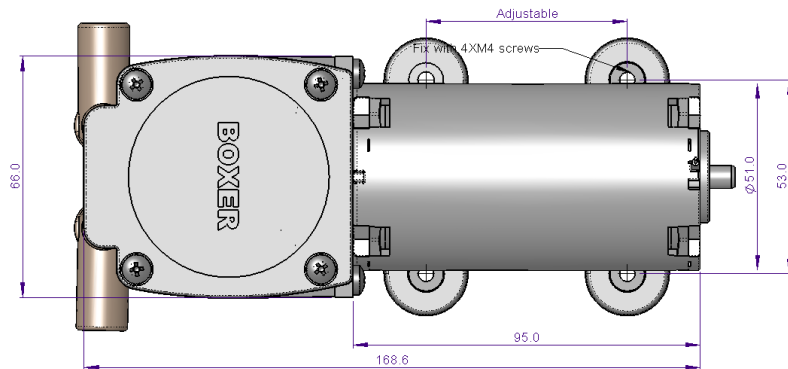
uno.

BOXER® PUMPS

Uno International Ltd.
20 Belsize Avenue
London NW3 4AU
Tel: +44 (0)20 7794 4080
Fax: +44 (0)20 7431 1426
Email: uno@boxerpumps.com
www.boxerpumps.com



Quad headed boxer 7004



Dual headed boxer 7502